

# Walking in the footsteps of Mary Gillham

## Walk three: Pwll Waun Cynon Wildlife Trust Nature Reserve, Mountain Ash



1



2



3



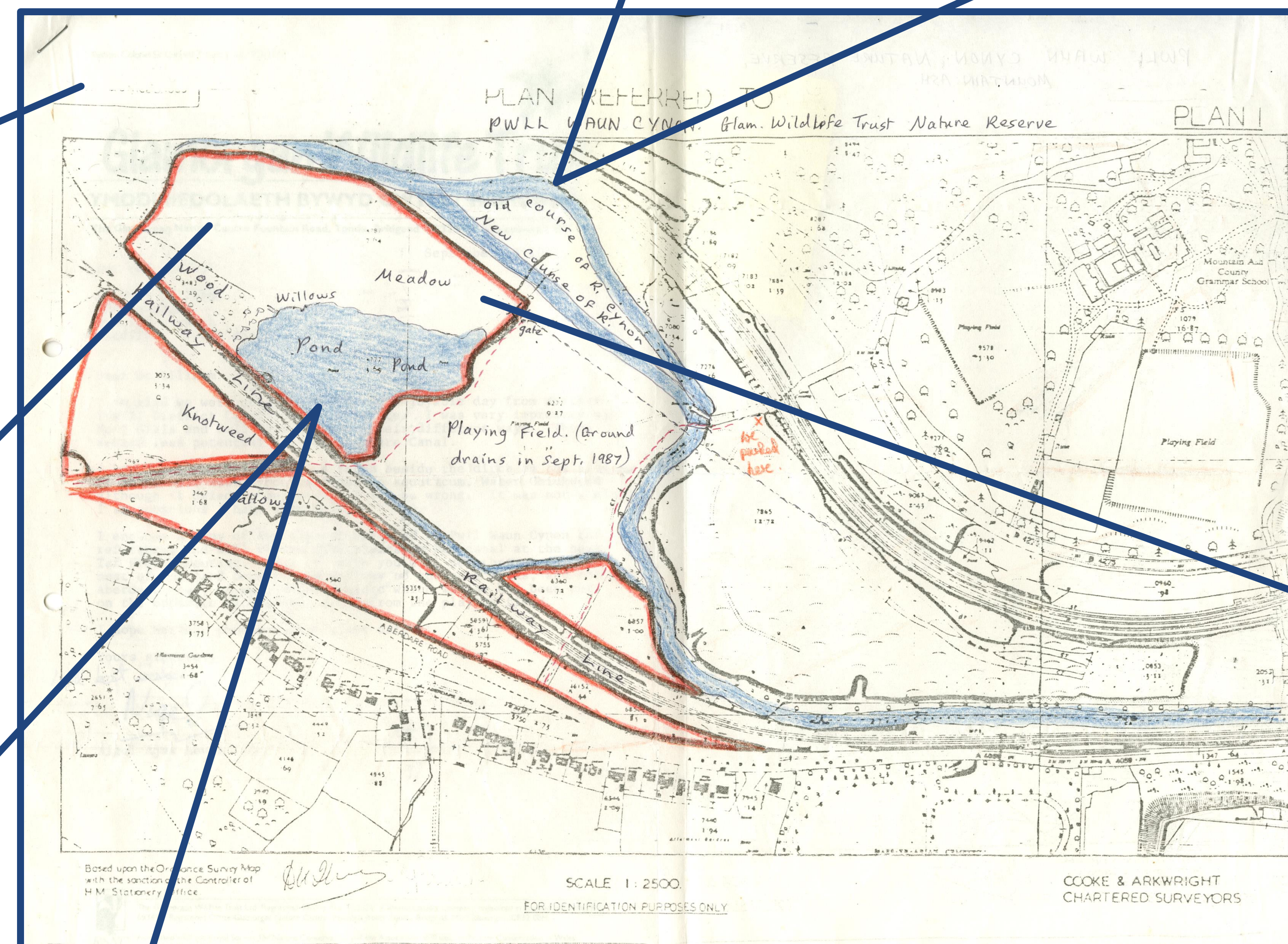
4



5



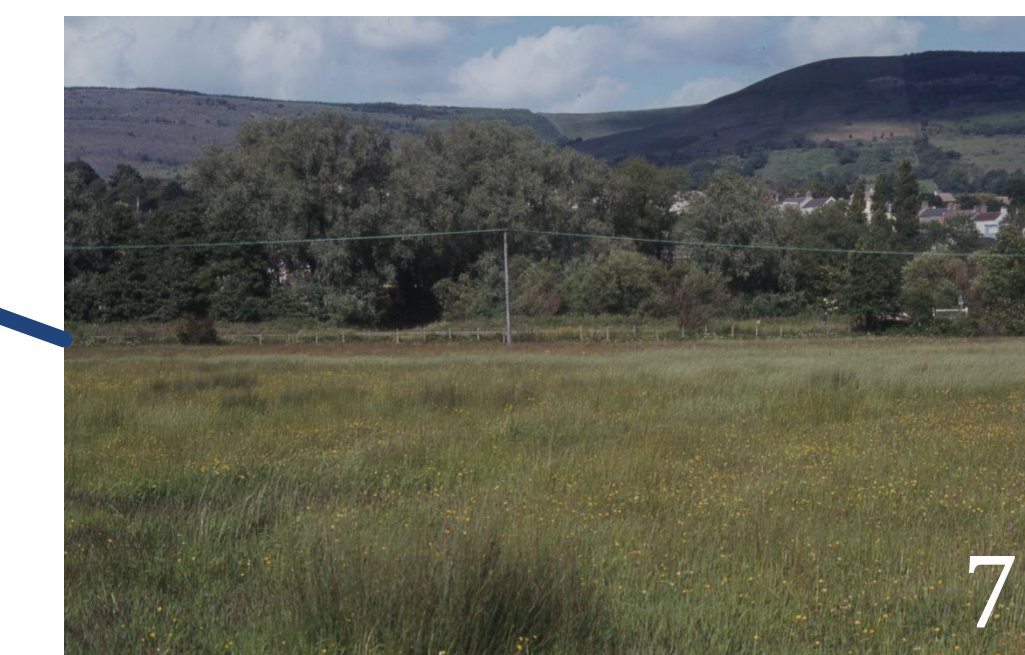
14



6



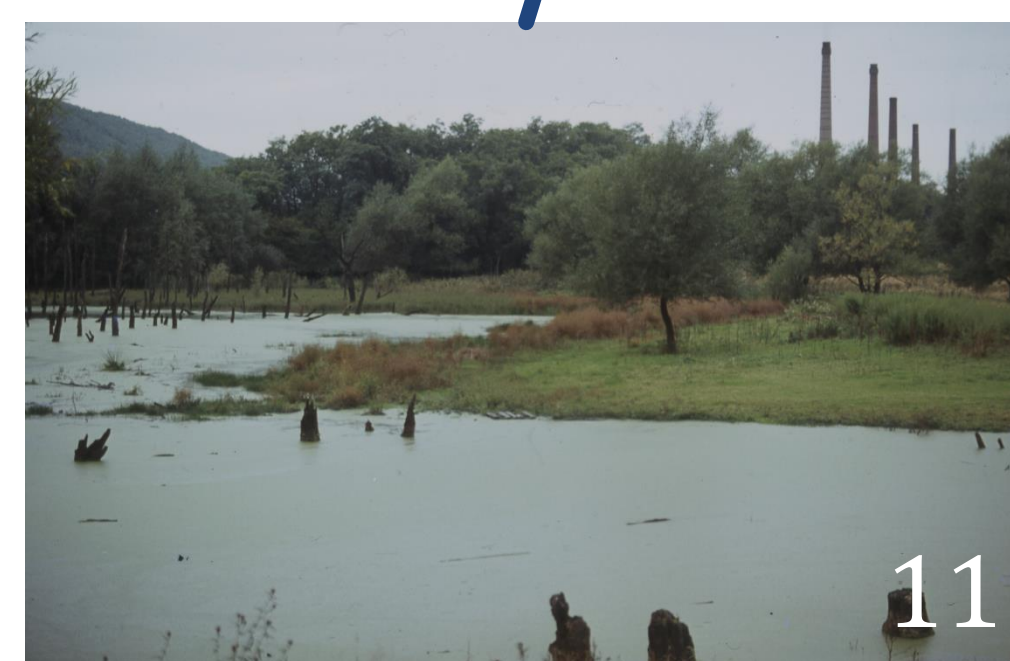
13



7



12



11



10



9



8

1. Dyffryn Ox-bow. View down valley from tip, October 1984
2. Oxbow pond at low level from burning tip, Mountain Ash. Dry weather, 17/10/84
3. Excavation, new bed of River Cynon from tip, June 1985
4. New River Cynon from burning tip, June 1985
5. Abercwmboi pond. Phurnacite works from burning tip, 23/10/84
6. Young elder leaves already black with carbon. Phurnacite, 04/04/74
7. Cynon water meadows. View to Cwmbach on East, July 1985
8. Coal getting above dram road Cefn Pennar, burning tip, 23/10/84
9. Blackened sycamore to leeward of Phurnacite works, Cynon, 04/04/74
10. Mountain Ash tip, current burning no colonising. 23/10/84
11. Cynon ox-bow below Phurnacite. Here at least 80 years, trees died 40 years ago, September 1984
12. Cynon ox-bow, water horsetail. Old nightjar-badger site above. 28/09/84
13. Water meadow below Cynon Phurnacite works. Great Burnet. Miners strike, 28/09/84
14. Smokeless fuel production between Aberdare and Mountain Ash. View West. 30/09/73